



ABCA13 Polyclonal Antibody

Catalog No	YP-Ab-00648
Isotype	IgG
Reactivity	Human;Rat;Mouse;
Applications	IF;ELISA
Gene Name	ABCA13
Protein Name	ATP-binding cassette sub-family A member 13
Immunogen	The antiserum was produced against synthesized peptide derived from human ABCA13. AA range:2251-2300
Specificity	ABCA13 Polyclonal Antibody detects endogenous levels of ABCA13 protein.
Formulation	Liquid in PBS containing 50% glycerol, 0.5% BSA and 0.02% sodium azide.
Source	Polyclonal, Rabbit,IgG
Purification	The antibody was affinity-purified from rabbit antiserum by affinity-chromatography using epitope-specific immunogen.
Dilution	Immunofluorescence: 1/200 - 1/1000. ELISA: 1/40000. Not yet tested in other applications.
Concentration	1 mg/ml
Purity	≥90%
Storage Stability	-20°C/1 year
Synonyms	ABCA13; ATP-binding cassette sub-family A member 13
Observed Band	
Cell Pathway	Cytoplasmic vesicle membrane ; Multi-pass membrane protein .
Tissue Specificity	Significantly expressed in the bone marrow, trachea, testis, thyroid and lung as well as in skin fibroblasts.
Function	sequence caution:Translated as Glu.,similarity:Belongs to the ABC transporter family.,similarity:Contains 2 ABC transporter domains.,tissue specificity:Expressed in testis, bone marrow and trachea.,
Background	In human, the ATP-binding cassette (ABC) family of transmembrane transporters has at least 48 genes and 7 gene subfamilies. This gene is a member of ABC gene subfamily A (ABCA). Genes within the ABCA family typically encode several thousand amino acids. Like other ABC transmembrane transporter proteins, this protein has 12 or more transmembrane alpha-helix domains that likely arrange to form a single central chamber with multiple substrate binding sites. It is also predicted to have two large extracellular domains and two nucleotide binding domains as is typical for ABCA proteins. Alternative splice variants have been described but their biological validity has not been demonstrated.[provided by RefSeq, Mar 2009],

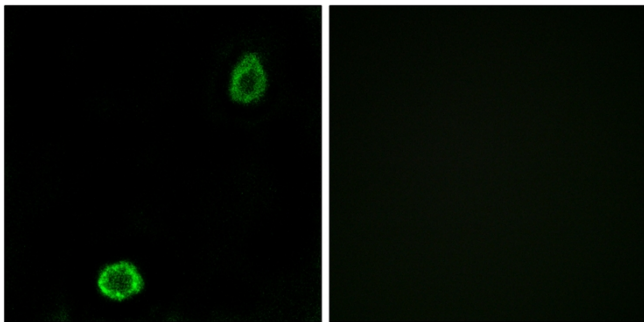
**matters needing attention**

Avoid repeated freezing and thawing!

Usage suggestions

This product can be used in immunological reaction related experiments. For more information, please consult technical personnel.

Products Images



Immunofluorescence analysis of A549 cells, using ABCA13 Antibody. The picture on the right is blocked with the synthesized peptide.